

## Network & Learning

DigiFusE is built on a strong **Community of Practice**, where partners share their experiences with proven educational environments



Scan to know more



## Research & Learning

Digifuse will develop and pilot the project **training and advisory method** for European organizations, incorporating access to English versions of BLEEP and TRIANGLE for inspiration or content replication.

### MAIN OUTCOMES:

- A SWOT analysis based on research about needs of staff and target groups
- A DigiFusE training and advise system based on the shared method
- An open access website
- Pilot training of the method using the 3 improved education environments

## Practice & Learning

The 3 education environments:

### ✦ BLEEP

- Lifelong blended learning for vulnerable groups
- Tools for prison staff & reintegration coaches

👉 <https://bleepsite.eu>

### 📖 TRIANGLE

- Secure digital education system
- Vocational training in closed institutions
- Build skills & portfolios safely

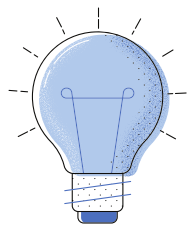
👉 <https://eu.trianglenow.eu/>

### 💡 PERSPEKTIVE

- Job-related skills for prisoners
- Innovative, practical learning tools
- Preparing for life beyond prison

👉 <https://perspektive-project.eu>

Funded by the European Union. Views and opinions expressed are however those of the author(s) only and do not necessarily reflect those of the European Union or the European Education and Culture Executive Agency (EACEA). Neither the European Union nor EACEA can be held responsible for them.



## Key objectives:

- Expanding access to adult education – We are committed to making **lifelong learning** more **inclusive** and accessible for everyone.
- Strengthening educator expertise – We aim to **support educators** and guidance staff in developing their **skills** and professional competences.
- Boosting digital readiness – We focus on equipping both learners and staff with the **digital skills** and competencies needed for today's world.

DigiFusE is an Erasmus+ KA2 project, aiming at creating a practical, evidence-based guideline for a successful Education Environment to help care institutes for vulnerable people



<https://www.digifuse.eu/>

# DigiFusE

DIGITAL FUSION ENVIRONMENTS

## Education Environments for vulnerable people